



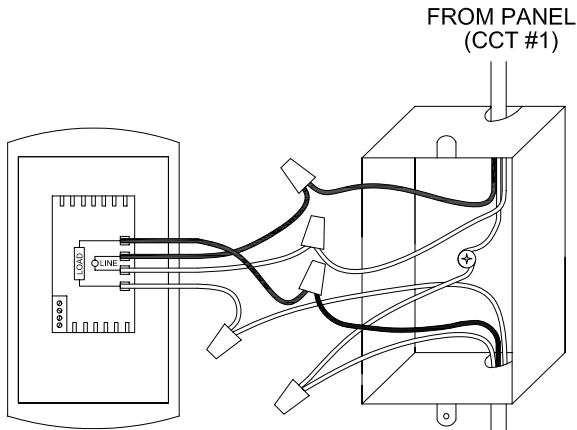
Relay Switch or Contactor for 120V

This switch allows you to control multiple circuits with a single control. It may be conveniently located inside an electrical junction box.

WIRING INSTRUCTIONS FOR RELAY

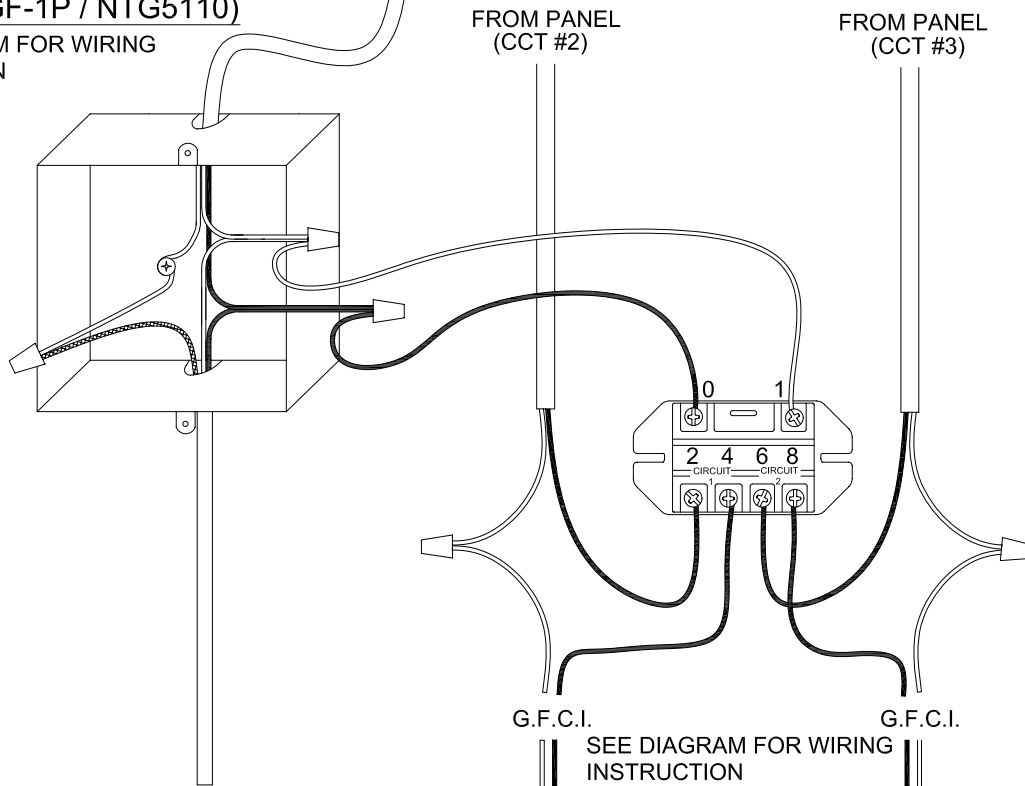
OMRON G7L-2A-BUBJ (110 VAC)

- 0- LINE 1 FROM CONTROL
 - 1- NEUTRAL WIRE FROM CONTROL
 - 2- LINE 1 FEED FROM PANEL (CCT #2)
 - 6- LINE 2 FEED FROM PANEL (CCT #3)
 - 4- LINE 1 TO NUHEAT (BLACK)
 - 8- LINE 2 TO NUHEAT (BLACK)
- NOTE: DO NOT CONNECT NEUTRAL WIRES FROM DIFFERENT CIRCUITS TOGETHER



NUHEAT Floor-Warming Control with G.F.C.I.(FTGF-1P / NTG5110)

SEE DIAGRAM FOR WIRING INSTRUCTION



TO NUHEAT
(LOAD)
MAX. 15 AMPS

TO NUHEAT
(LOAD)
MAX. 16 Amps
- when using blank faced 20A GFCI
MAX. 24 Amps
- when using 30A GFCI breaker

TO NUHEAT
(LOAD)
MAX. 16 Amps
- when using blank faced 20A GFCI
MAX. 24 Amps
- when using 30A GFCI breaker

Nuheat Industries Ltd. assumes no responsibility for field wiring. Please consult a certified electrician for further instruction if needed. Wiring must be in accordance with national and local electrical codes. Wiring methods may differ for each control, please consult manufacturer's instructions for actual specifications.