

Nuheat Thermostat Wiring: 240V

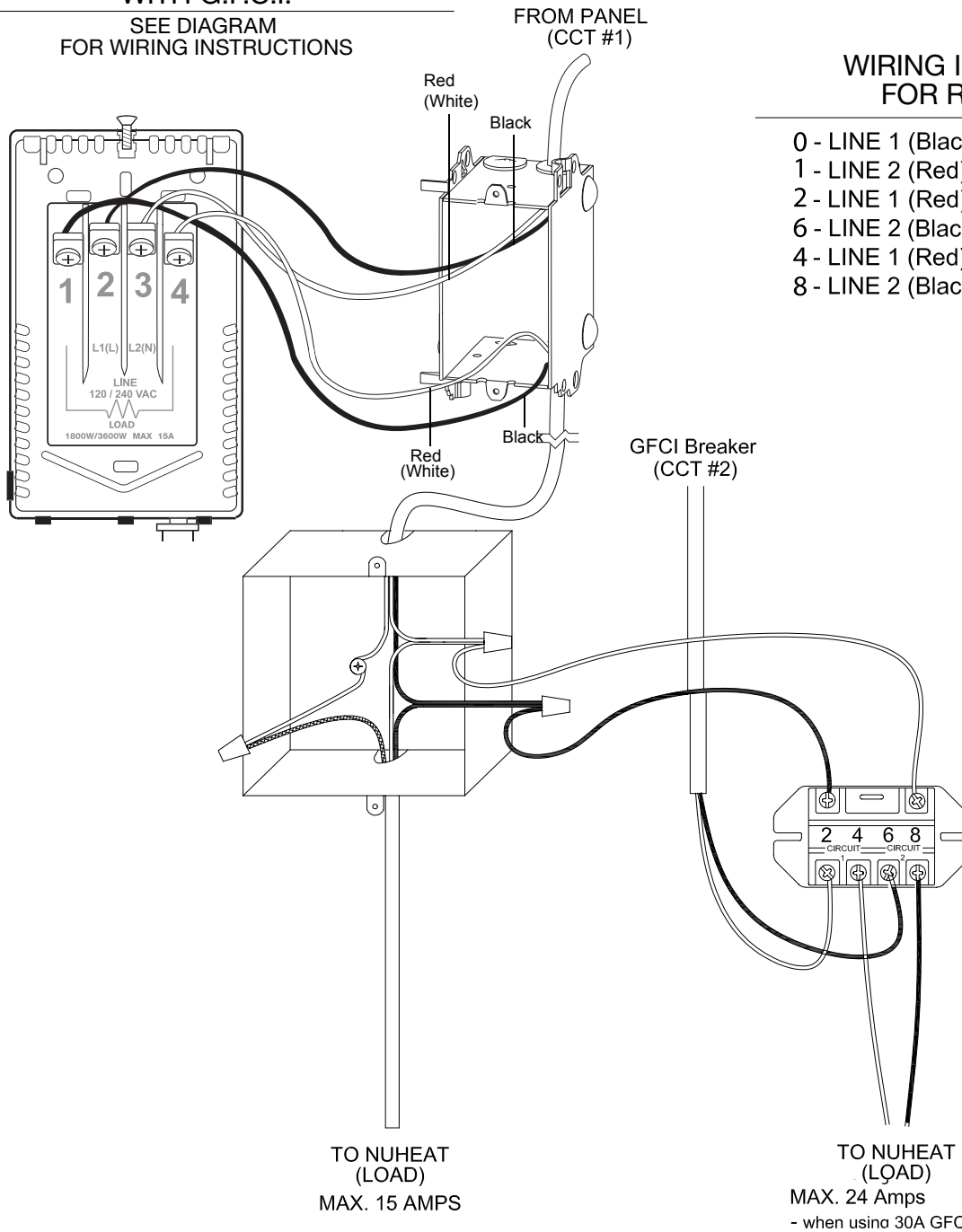
FOR ELEMENT NON-PROGRAMMABLE FLOOR HEATING THERMOSTAT

RELAY SWITCH OR CONTACTOR FOR 240V

This switch allows you to control multiple circuits with a single control. It may be conveniently located inside an electrical junction box.

NUHEAT FLOOR HEATING CONTROL WITH G.F.C.I.

SEE DIAGRAM FOR WIRING INSTRUCTIONS



WIRING INSTRUCTIONS FOR RELAY (240V)

- 0 - LINE 1 (Black) FROM CONTROL
- 1 - LINE 2 (Red) FROM CONTROL
- 2 - LINE 1 (Red) FROM GFCI Breaker
- 6 - LINE 2 (Black) FROM GFCI Breaker
- 4 - LINE 1 (Red) TO NUHEAT
- 8 - LINE 2 (Black) TO NUHEAT

Nuheat Industries Ltd. assumes no responsibility for field wiring. Please consult a certified electrician for further instruction if needed. Wiring must be in accordance with national and local electrical codes. Wiring methods may differ for each control, please consult manufacturer's instructions for actual specifications.